

Google Custom Search

for Magento 2

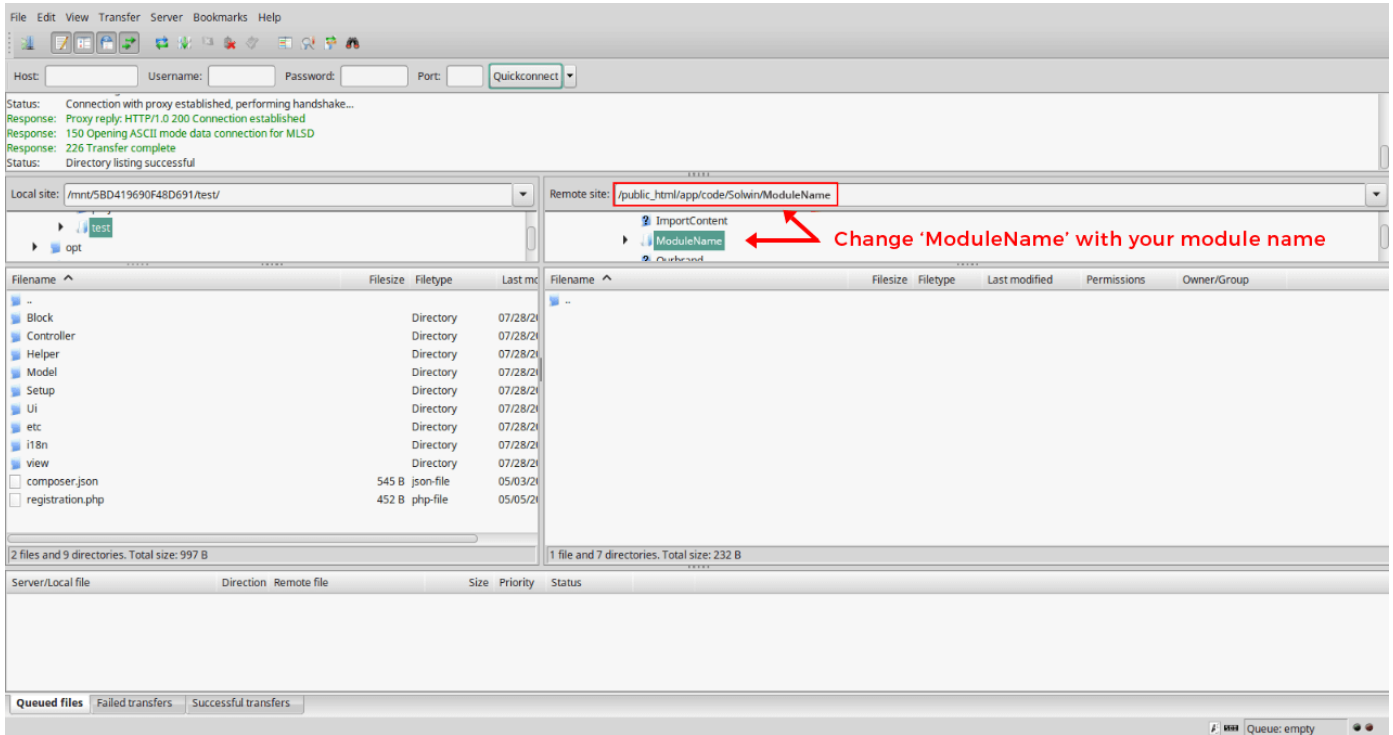


Installation Guide

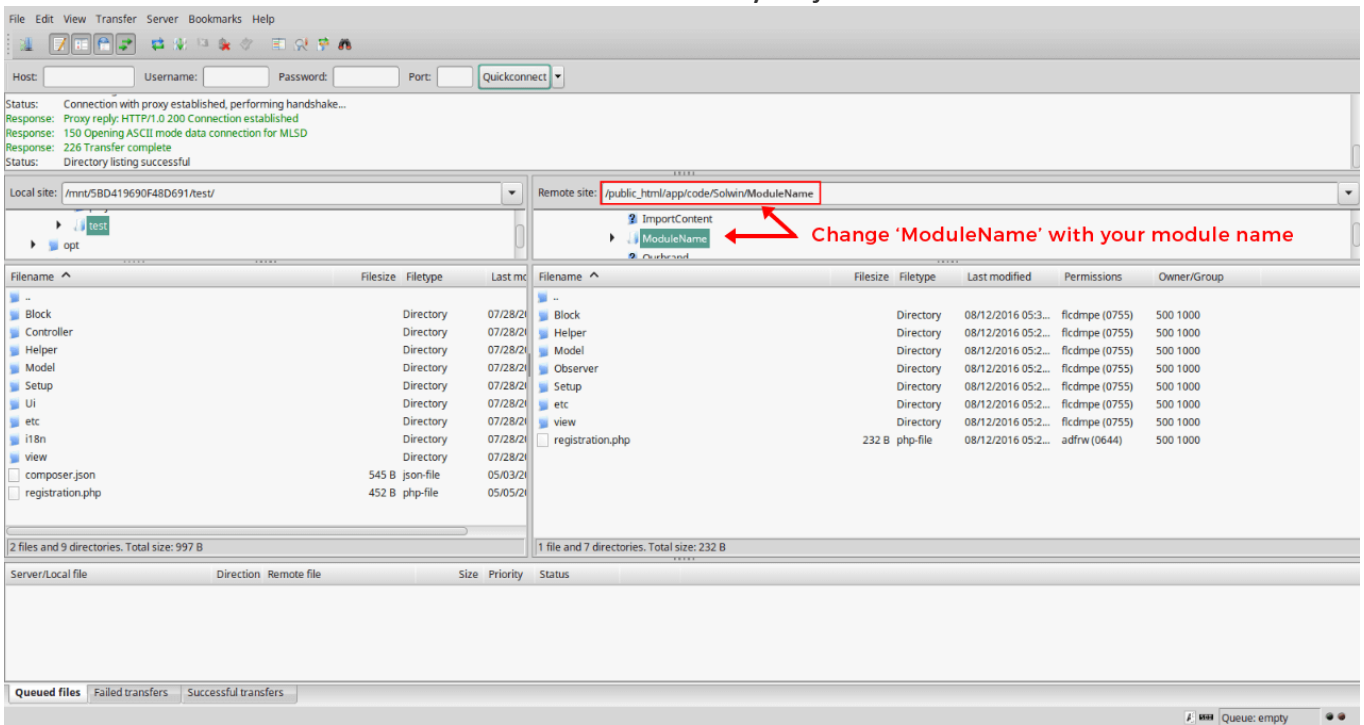
Version 1.0.3

Installation Guide for Google Custom Search :

1. Download the .ZIP file from the account.
2. Log into the Magento server (or switch to) as a user, who has permissions to write to the Magento file system.
3. Create folder structure **app/code/Solwin/GoogleCustomSearch/**



4. Extract the contents of the .ZIP file to the folder you just created.



5. Navigate to your store root folder in the SSH console of your server:

Run :

```
cd <your Magento install dir>
```

Then :

```
php bin/magento module:enable Solwin_ GoogleCustomSearch  
php bin/magento setup:upgrade  
php bin/magento setup:static-content:deploy
```

6. Go to **System-> Cache Management** page on your magento backend and click the **Flush Magento Cache** Button.

The screenshot shows the 'Cache Management' page in the Magento 2 admin interface. On the left is a sidebar with navigation options: DASHBOARD, SALES, PRODUCTS, CUSTOMERS, MARKETING, CONTENT, REPORTS, STORES, and SYSTEM (highlighted with a red box). Below the sidebar, there are buttons for 'Refresh' and 'Submit', and a message '12 records found'. On the right, there are two buttons: 'Flush Cache Storage' and 'Flush Magento Cache' (highlighted with a red box). Below these buttons is a table with 5 columns: Cache Type, Description, Tags, and Status. The table contains 12 rows of cache records, all with a status of 'ENABLED'.

Cache Type	Description	Tags	Status
Configuration	Various XML configurations that were collected across modules and merged.	CONFIG	ENABLED
Layouts	Layout building instructions.	LAYOUT_GENERAL_CACHE_TAG	ENABLED
Blocks HTML output	Page blocks HTML.	BLOCK_HTML	ENABLED
Collections Data	Collection data files.	COLLECTION_DATA	ENABLED
Reflection Data	API interfaces reflection data.	REFLECTION	ENABLED
Database DDL operations	Results of DDL queries, such as describing tables or indexes.	DB_DDL	ENABLED
EAV types and attributes	Entity types declaration cache.	EAV	ENABLED
Integrations Configuration	Integration configuration file.	INTEGRATION	ENABLED
Integrations API Configuration	Integrations API configuration file.	INTEGRATION_API_CONFIG	ENABLED
Page Cache	Full page caching.	FPC	ENABLED
Translations	Translation files.	TRANSLATE	ENABLED
Web Services Configuration	REST and SOAP configurations, generated WSDL file.	WEBSERVICE	ENABLED

7.log out from the backend and log in again.

NOTE : Make sure the installation is done from under the FTP administrator account. Otherwise make sure to set 775 permissions to the store root directory after the extension is deployed.