



# User's Guide

---

## **Adding Magento 2 (prior to v5.8)**

---

# Contents

---

Adding Magento 2 - (prior to version 5.8) .....	3
Phase 1: Install the Magento 2 ShipWorks Extension and obtain your Access Key .	3
Phase 2: Add and configure your Magento 2 store in the ShipWorks application ..	5
Still Need Help? .....	7



## Adding Magento 2 - (prior to version 5.8)

**Note:** This document explains how to add a Magento 2 store using the Magento 2 ShipWorks Extension. This article is NOT intended for use with the Magento 1 Module from ShipWorks.com, nor the Magento 1 Connect Extension. For information on adding a Magento 1 store please see our documentation to [Add a Magento 1 Store with MagentoConnect](#) and/or [Add a Magento 1 Store Without MagentoConnect](#).

Adding a Magento 2 Store in ShipWorks is done in two general phases, installing the Magento 2 ShipWorks extension and connecting your ShipWorks software to the Magento extension.

**Before you begin**, please be sure that you can:

- » Log into you Magento marketplace as a consumer
- » Can log into your Magento store as an administrator

**Note:** The Magento 2 ShipWorks Extension is currently not compatible with PHP version 7.

## Phase 1: Install the Magento 2 ShipWorks Extension and obtain your Access Key

NOTE: INSTALLING A MAGENTO 2 EXTENSION (LIKE SHIPWORKS) MAY TAKE AN HOUR OR MORE AND DURING THIS TIME YOUR WEBSITE WILL BE DOWN AND NOT ACCESSIBLE!

**NOTE:** ShipWorks does NOT provide any support for phase 1 of the installation beyond what is included this document. Follow Magento's instructions carefully (including taking a full backup of your Magento site installation as needed).

1. Browse to <https://marketplace.magento.com>.
2. Search for **ShipWorks**.

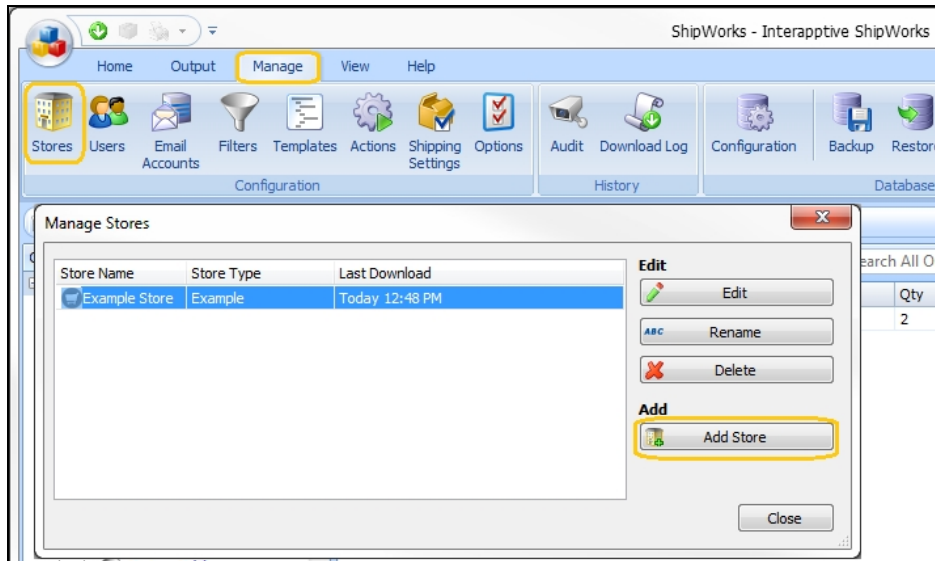


3. Click the **ShipWorks** logo.
4. Click **Add to cart**.
5. Go to **Checkout**.
6. Enter payment details (required even though the Magento 2 ShipWorks Extension is free).
7. You will receive an order confirmation email Magento with the instructions for installing the ShipWorks extension.
8. Using the link provided in the Magento email, connect your purchases to your Magento 2 platform by using your Authorization Key Access.
9. Create a New access key.
10. Using the link provided in the Magento email, learn how to use the Component Manager to install newly purchased extensions.
11. Log into your Magento store with your administrator credentials.
12. Select **System > Web Setup Wizard**. (note if you do not see the Web Setup Wizard option, please verify that the –“zoom” is set to at least 100%).
13. Select **System Configuration**.
14. If you haven't already done so, enter your Authentication Keys in the provided fields.
15. Save **Configuration**.
16. Select **Component Manager** (components are sorted alphabetically). Verify that the ShipWorks and the Magento 2 ShipWorks Extension is installed.
17. Return to the admin dashboard
18. Click **System > Integration > Add New Integration > Create a Name** (name it whatever you like) > Enter the admin password > Save
19. Locate the item you just created . **Click Edit > API** > Check the box next to sales to select all roles associated with Sale. > Integration info> Enter admin password > **Save**
20. Click **Activate > Verify** that Sales roles are selected > Click **Allow**.
21. Copy the Access Token token value to your computer's clipboard. The Access Token will be entered in the Token field in the ShipWorks application.

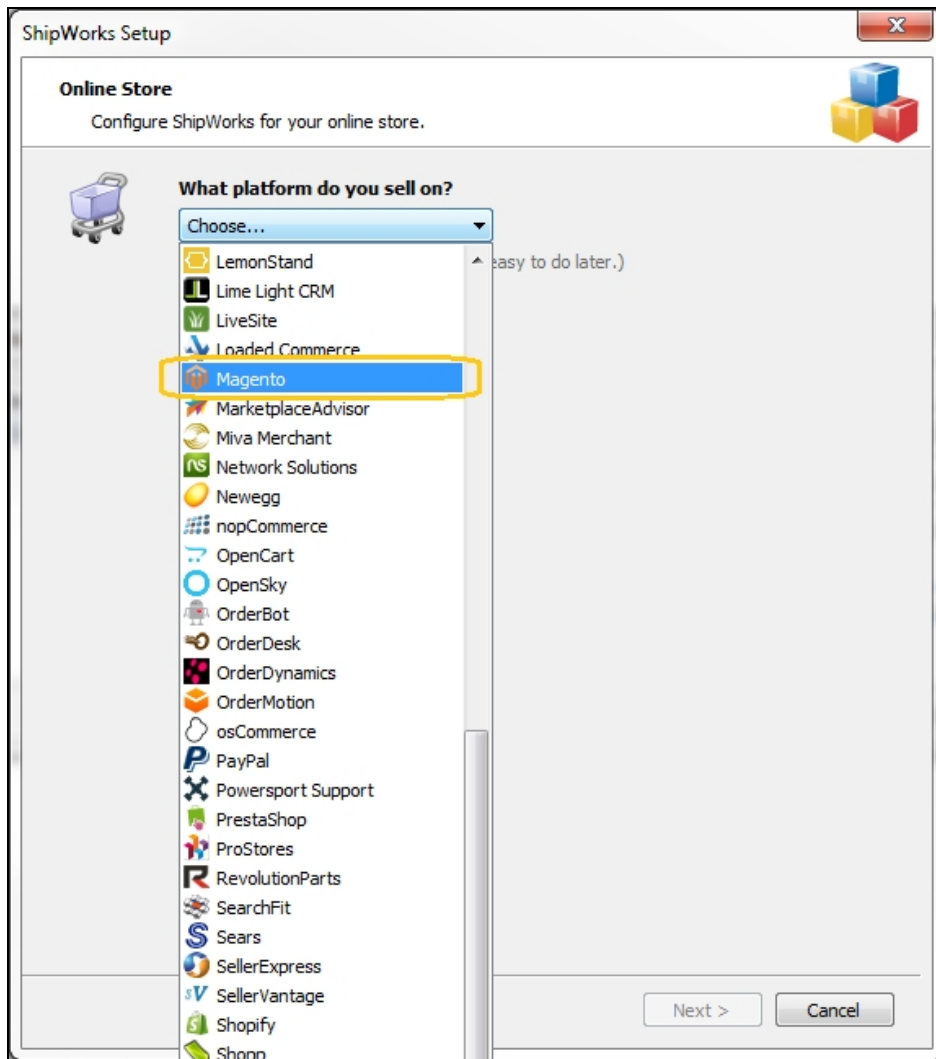


## Phase 2: Add and configure your Magento 2 store in the ShipWorks application

1. In the ShipWorks application click **Manage > Stores > Add Store**.



2. Choose **Magento** and click **Next**.



3. Choose Magento 2. Input the Access Token and Module URL for ShipWorks to communicate with your Magento 2 store

- Token: obtained by following the steps provided by Magento)
- Module URL: something like <http://yourstorename.example/rest/V1/shipworks>

**Note:** the "V" in the "V1" text must be uppercase!!

- Store code: optional only use if adding more than one Magento store on the same Magento account

ShipWorks Setup

**Store Setup**  
Enter the following information about your online store.

**Magento Connection**

Magento Module from shipworks.com  
 MagentoConnect Extension  
 **Magento2**

**Account Credentials**  
Enter the access token ShipWorks should use to connect to your store:

Token:

**Connection URL**  
Enter the URL to the ShipWorks module. For help installing or finding the module URL, [click here.](#)

Module URL:

Store code:  (Only for multi-store Magento installations)

< Back   Next >   Cancel

4. Continue entering the requested information, clicking **Next** to proceed to each next screen.

When you click Finish, ShipWorks will automatically download your first batch of orders. The first batch may take a while, but subsequent downloads will not take as long.

## Still Need Help?

Please feel free to [reach out to one of our awesome Customer Care representatives in St. Louis](#). We are happy to assist you.