

# Akeneo Connector for Magento 2

Akeneo Connector is a Magento 2 extension that allows you to export your catalog data and structure from Akeneo PIM to Magento 2 through API calls. This version of the connector is designed to work with Akeneo PIM Community Edition. It could work with either the Community Edition or the Enterprise Edition of Magento 2.

## Installation

Before implementing a PIM, determine the main business objectives you need to accomplish, whether that's improving product information quality, accelerating time-to-market, or anything else. This is an essential step to set expectations and define how you'll measure success. With your objectives in mind, you can structure your PIM to support your commerce strategy.

**Install module by Composer as follows:**

```
composer require akeneo/module-magento2-connector-community
```

**Enable the module in Magento:**

```
php bin/magento module:enable Akeneo_Connector
```

## Check and update database setup:

```
php bin/magento setup:db:status php  
bin/magento setup:upgrade
```

## Flush Magento caches:

```
php bin/magento cache:flush
```

## Compatibility

Akeneo Connector for Magento 2 (Community Edition) is compatible with:

- Akeneo PIM >= 3.0 (CE & EE) | Akeneo EE features are not included
- Akeneo PIM >= 4.0 (CE & EE) | Akeneo EE features are not included
- Magento 2 > 2.2.X (CE & EE)
- PHP >=5.6

## Configure Akeneo

- Make sure to configure your API user credentials
- Make sure your API users have the full permission to view, edit, and manage products
- Make sure currencies enabled in Akeneo match with Magento currencies
- Make sure to translate your families, attributes, and attribute options labels for all languages available in Magento

**Important:** If you need help configuring Akeneo, please refer to the [Akeneo Help Center](#).

## Configure Magento

Before using Akeneo Connector for Magento 2, please configure the following:

- Websites and stores
- Store languages and currencies
- API settings (in «Store > Configuration > Catalog > Akeneo Connector» following our configuration guide)
- After category import, set the «Root Category» for your Magento stores in «Stores > Settings > All Stores»

## Configure Akeneo Connector for Magento 2

### API configuration:

Before using Akeneo Connector for Magento 2, please configure the following:

- Stores > Catalog > Akeneo Connector > Akeneo API Configuration

Configuration:	Usage:
Akeneo base URL	URL of your Akeneo PIM
Akeneo username	Login for your Akeneo account (The user should have permissions to list)
Akeneo password	The password for your account
Akeneo API client ID	API client ID ( <a href="https://api.akeneo.com/documentation/security.html">https://api.akeneo.com/documentation/security.html</a> )
Akeneo API client secret	API client secret ( <a href="https://api.akeneo.com/documentation/security.html">https://api.akeneo.com/documentation/security.html</a> )
Pagination size	Set pagination for all imports (default value is 100)
Admin Website Channel	Determine which Akeneo channel Magento Admin Data will come from
Website Mapping	Mapping between Magento 2 websites and Akeneo channels

## Attributes configuration

Configuration is available in Magento 2 back-office under:

- Stores > Catalog > Akeneo Connector > Attributes

Configuration:	Usage:
Additional types	Mapping between Akeneo custom attribute types and Magento types. Do not map native Akeneo types with native Magento types, as this mapping is already managed by the connector. This mapping is only for custom Akeneo attributetypes
Website attribute	<p>Since Akeneo Connector for Magento 2 version 100.2.1, you can choose how to associate your products to your websites using a select or multiselect attribute. The attribute code given must be a valid Akeneo select or multiselect attribute.</p> <p>The code of its options in Akeneo must match your Magento 2 websites codes. You can find your Magento 2 websites codes in Store &gt; Configuration.</p>

<b>Website attribute</b>	<p>Your products will be assigned to the websites selected in the given attribute. If the value for this attribute is empty for a product, it won't be assigned to any website.</p> <p>If this configuration is empty, your products will be assigned automatically following your Website Mapping found in Akeneo API Configuration.</p>
<b>Default product status</b>	<p>Since Akeneo Connector for Magento 2 Community Edition and Enterprise Edition version 100.4.2 in the connector configuration page, in Products, you can choose to either enable or disable new products.</p> <p>During product updates, already imported products will keep their old status, unless the product is disabled in Akeneo PIM.</p>

### Categories configuration

Configuration is available in Magento 2 back-office under:

- Stores > Catalog > Akeneo Connector > Categories

<b>Configuration:</b>	<b>Usage:</b>
<b>Activate new categories</b>	Newly imported categories will be activated
<b>Include new categories in menu</b>	Newly imported categories will be included in menu
<b>Set new categories in anchor mode</b>	Newly imported categories will be in anchor mode
<b>Categories</b>	Select the categories you don't want to import. If the multiselect is empty, it means you don't have any categories in your Akeneo, or the provided credentials are wrong.

### Filter Products configuration

Configuration is available in Magento 2 back-office under:

- Stores > Catalog > Akeneo Connector > Filter products

<b>Configuration:</b>	<b>Usage:</b>
<b>Mode</b>	Choose your method to filter product data: Standard or Advanced

Filters only apply to the "Product import" task.

## Advanced configuration

Configuration:	Usage:
Advanced Filter	Build your query using a JSON

## Standard configuration

Configuration:	Usage:
Completeness type	Choose your logical operator (e.x. Equals, Lower than, etc.)
Completeness value	Fix the completeness level required for import
Status	Choose the status of the products to import (Enabled, Disabled, No condition)
Updated mode	Choose your updated mode : you can import only updated PIM products since last X days, between two dates, before a date or after a specific date
Families	Select the families you don't want to retrieve products from

## Products configuration

Configuration is available in Magento 2 back-office under:

- Stores > Catalog > Akeneo Connector > Products

Configuration:	Usage:
Attribute Mapping	Map Akeneo attribute codes with Magento 2 attribute codes
Metric Attributes	Since the version 100.3.0, you can configure the behavior of your Metric attributes and define which Metric attributes are used as variant. You can also define to concatenate the metric unit to the value imported in Magento 2.
Default tax class	Set up default tax class for websites
Configurable	Use the value column to force data for a specific attribute. Leave empty to retrieve the value of the first simple product. The value must be a chain between quotes or an SQL statement.

<b>Product model batch size</b>	Since Akeneo Connector for Magento 2 version 100.3.3, you can adjust Product Model Batch Size and Product Model Update Length to prevent database limitations from happening.
<b>Product model update length</b>	In the case of catalogs with a huge number of attributes and product models, some users might have experienced MYSQL errors related to the size of the updates during the Product Model import job. Those configurations allow you to manage the size of Product Model import batches and the size of the MYSQL updates statements.
<b>Import media files</b>	Set to «Yes» to import media files
<b>Akeneo Images Attributes</b>	Declare Akeneo attributes to be imported as image attributes
<b>Product Images Mapping</b>	Map Akeneo image attribute with Magento small image, thumbnail and swatch image
<b>Import File attribute</b>	Since Akeneo Connector for Magento 2 version 100.4.2, you can enable the download of your file attributes from Akeneo PIM to Magento 2.
<b>Regenerate URL rewrites</b>	Set to «Yes» to regenerate URL rewrites for products
<b>Does Akeneo data override content staging</b>	Since the Akeneo Connector for Magento 2 Community version 100.4.4, in the connector configuration page, in Products, you can configure the connector's behavior depending on Magento 2 content staging feature

## Import

### About the import

The Akeneo Connector inserts all the data into a temporary table. Then, data is manipulated (mapping,...) within this temporary table in SQL. Finally, the modified content is directly inserted in SQL in Magento 2 tables.

Even if raw SQL insertion is not the way you usually import data into a system, it is far faster than anything else, especially with the volume of data within a full Akeneo catalog. This results in a significant time saving for your imports.

### Import Order

In order to prevent errors due to missing data in Magento 2, you need to launch the jobs in a specific order:

- Categories
- Families
- Attributes
- Options
- Product Models
- Family Variants
- Products

You can skip steps, but be careful! If, for example, you want to import attribute options, have newly created attributes, and don't import them before (even if you don't want to import this option for those missing attributes), it will result in an error.

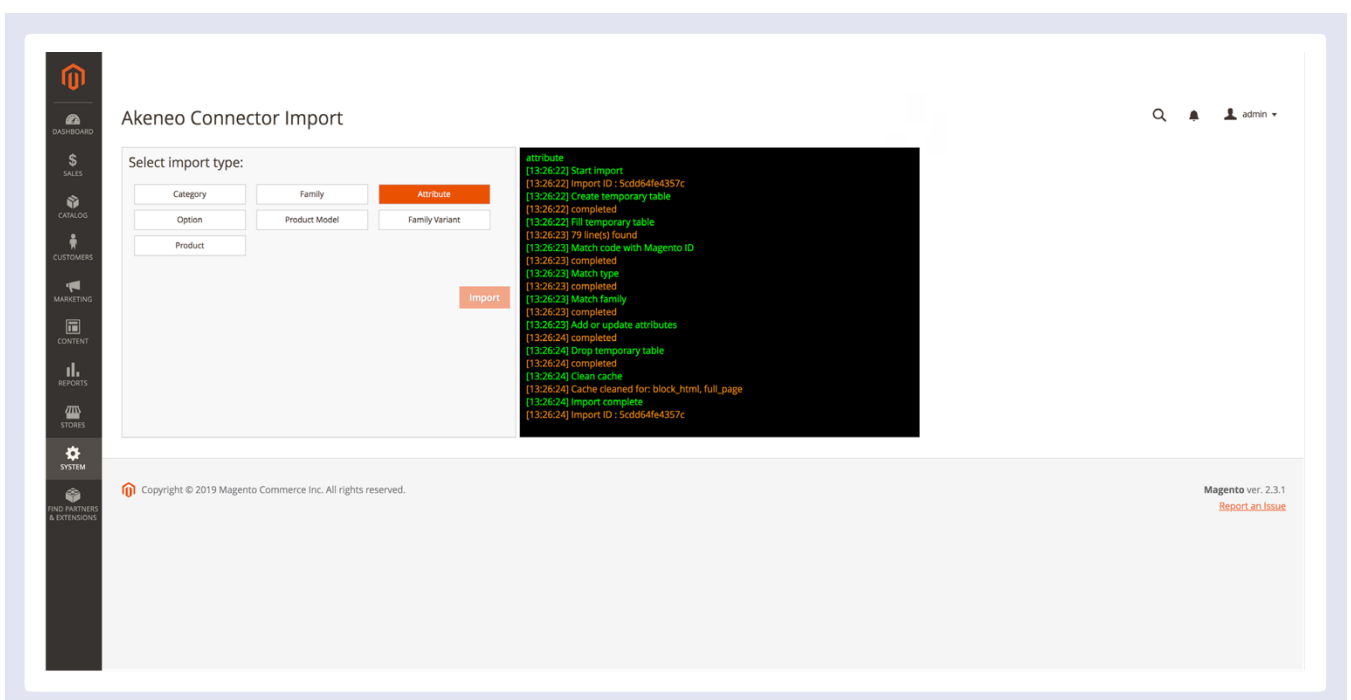
So check your data before importing it!

### Media Import

Media files are imported during the product import process. You can configure the attributes to use in the Magento Catalog > Akeneo Connector configuration section.

### Interface

Akeneo Connector Import Interface is located at System > Akeneo Connector > Import:



Select your import type from the list and click “Import” to launch the job:

- Once you launch your import, you can follow the import progress with the console.  
**DO NOT CLOSE THE BROWSER WINDOW WHILE THE IMPORT IS STILL IN PROCESS!**
- If an error appears, you can easily identify which task the problem affected. You can also check your logs files if you want further information.

## Cron jobs

You can configure cron tasks through configuration for each import.

**Set your cron expression in your crontab following this example:**

```
0 22 * * * /usr/bin/php /path/to/magento/current/bin/magento akeneo_connector:import
--code=import-type >> /path/to/magento/current/var/log/akeneo_connector_import_type.cron.log`
```

**You can also launch an import directly from command line:**

```
php bin/magento akeneo_connector:import --code=import-type
```

**With import-type equals:**

- category
- family
- attribute
- option
- product\_model
- family\_variant
- product

## Get the Premium Version

There are 2 versions of the Akeneo Connector for Magento 2.

In addition to the core features of Akeneo PIM Community Edition, the Premium Version of the connector supports additional Akeneo PIM Enterprise Edition-only features, such as Product Assets and Reference Entities.

The Premium Version of the connector also benefits from SLA-backed support by Akeneo, as well as access to future enhancements.

Get in touch with Akeneo for more details! See below for contact details.

## Customize Your AkeneoConnector

If the multiple configurations of the Akeneo Connector don't suit your business logic, or if you want to have other possibilities for import, you can always override the Akeneo Connector business logic.

Just keep in mind a few things before starting to develop your own logic:

- Observers define each task for a given import. If you want to add a task, declare a new method in the corresponding Import class and add to the Observer.
- One method in Import class = One task
- There is no data transfer between tasks



Note that if you think your feature could be used by others, and if you respect this logic, we would be glad to add it to Akeneo Connector: just submit a PR!

## Migrate from previous API version (Agence Dn'D PIMGento 2 API)

First, you will need to disable all PIMGento2 (API) modules:

```
php bin/magento module:disable Pimgento_Api
```

Then, flush the cache:

```
php bin/magento cache:flush
```

Install new Akeneo Connector Extension:

```
composer require akeneo/magento2-connector-community php  
bin/magento module:enable Akeneo_Connector
```

Check and update database setup:

```
php bin/magento setup:db:status.php  
bin/magento setup:upgrade
```

Flush cache again:

```
php bin/magento cache:flush
```

Migrate data from pimgento tables to akeneo\_connector tables:

Custom tables names have changed during connector migration.

You will have to copy content from pimgento tables to akeneo\_connector tables as follows:

```
INSERT INTO akeneo_connector_entities SELECT * FROM pimgento_entities;  
INSERT INTO akeneo_connector_family_attribute_relations SELECT * FROM pimgento_family_attribute_relations;  
INSERT INTO akeneo_connector_import_log SELECT * FROM pimgento_import_log;  
INSERT INTO akeneo_connector_import_log_step SELECT * FROM pimgento_import_log_step;  
INSERT INTO akeneo_connector_product_model SELECT * FROM pimgento_product_model;
```



## Migrate from obsolete CSV version (Agence Dn'D PIMGento 2 CSV)

**First disable all PIMGento2 modules:**

```
php bin/magento module:disable Pimgento_Category php
bin/magento module:disable Pimgento_Family php
bin/magento module:disable Pimgento_Attribute php
bin/magento module:disable Pimgento_Option php
bin/magento module:disable Pimgento_Variant php
bin/magento module:disable Pimgento_Product php
bin/magento module:disable Pimgento_Import php
bin/magento module:disable Pimgento_Entities php
bin/magento module:disable Pimgento_Log
```

**Then, flush the cache:**

```
php bin/magento cache:flush
```

**Install new Akeneo Connector Extension:**

```
composer require akeneo/magento2-connector-community php
bin/magento module:enable Akeneo_Connector
```

**Check and update database setup:**

```
php bin/magento setup:db:status php
bin/magento setup:upgrade
```

**Flush cache again:**

```
php bin/magento cache:flush
```

**Configure Akeneo Connector in Magento 2 backend:**

Please refer to the configuration guide above.

**Re-import all entities:**

Please refer to the configuration guide above.

**Important notes:**

It is important to know that the table «pimgento\_variant» in the CSV version is now called «akeneo\_connector\_product\_model». This is why you need to re-import all entities after the migration to be sure that all data is set correctly.

All custom rewrites of the previous PIMGento2 extension will be obsolete when migrating to Akeneo Connector.

---

## FAQ

### Do imports override my data?

Yes. If you send a value for a field, it will override the previous value for this field. However, Akeneo data should always be accurate!

### Is Akeneo Connector compatible with...?

If you want to check the compatibility of the module you can now go to the [Compatibility](#) section.

### When Akeneo Connector will be compatible with...?

Ensuring compatibility from one version to another remains our priority. Thanks to Akeneo API, the Akeneo Connector is natively compatible with new versions of Akeneo although it may not include all the latest features. Get in touch with Akeneo to learn about the product roadmap.

### Can Akeneo Connector handle multiple websites?

Yes, Akeneo Connector can handle multiple websites and multiple stores.

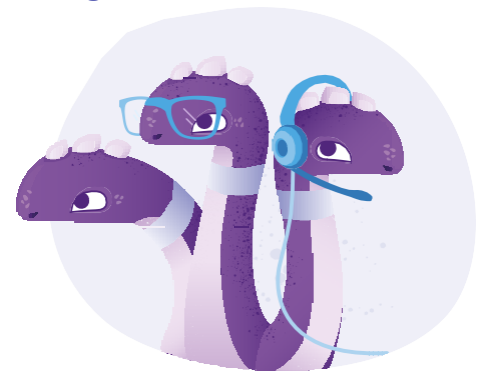
### How can I contribute to Akeneo Connector?

You can contribute to Akeneo Connector by submitting PR on Github. However, you need to respect a few criteria:

- Respect Akeneo Connector logic and architecture
- Be sure not to break other features
- Submit cleancode
- Always update the documentation if you submit a new feature

### Can Akeneo Connector update existing products or categories in Magento?

As Akeneo Connector is using direct queries and a mapping table to speed up and optimize import time, it is not able to recognize products and categories that have not been imported with the connector.



### How to set a product name as a URL?

Add Akeneo attribute mapping that points to the field «url\_key»:

- Go to Store > Configuration > Catalog > Akeneo Connector
- Add attribute mapping
- Set Akeneo to «akeneo\_product\_name\_field»
- Set Magento to «url\_key»
- Save

## Contact and support

Get in touch with Akeneo to learn more about the benefits and support model of the Premium Version of Akeneo Connector for Magento 2 (Enterprise Edition).

- Tel. (France): +33 (0)2 55 59 00 00
- Tel. (Germany): +49 211 23396655
- Tel. (U.S.A.): +1 (833) PIM-4ALL
- E-Mail: [magento@akeneo.com](mailto:magento@akeneo.com)